



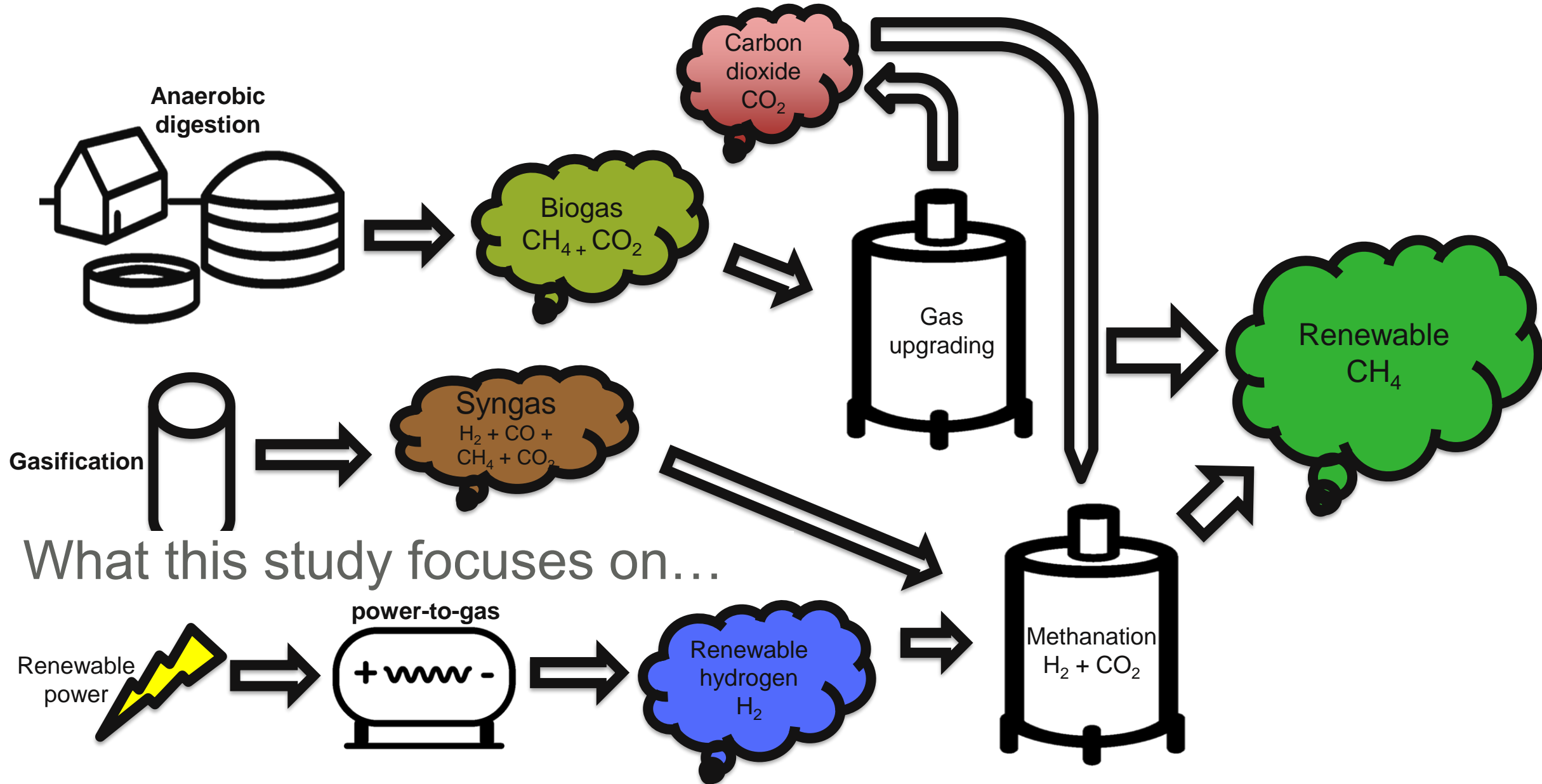
December 10th 2020

Biomethane potential in Belgium

Matthieu Schmitt, ValBiom
m.schmitt@valbiom.be

A  gas.be study realized by  ValBiom

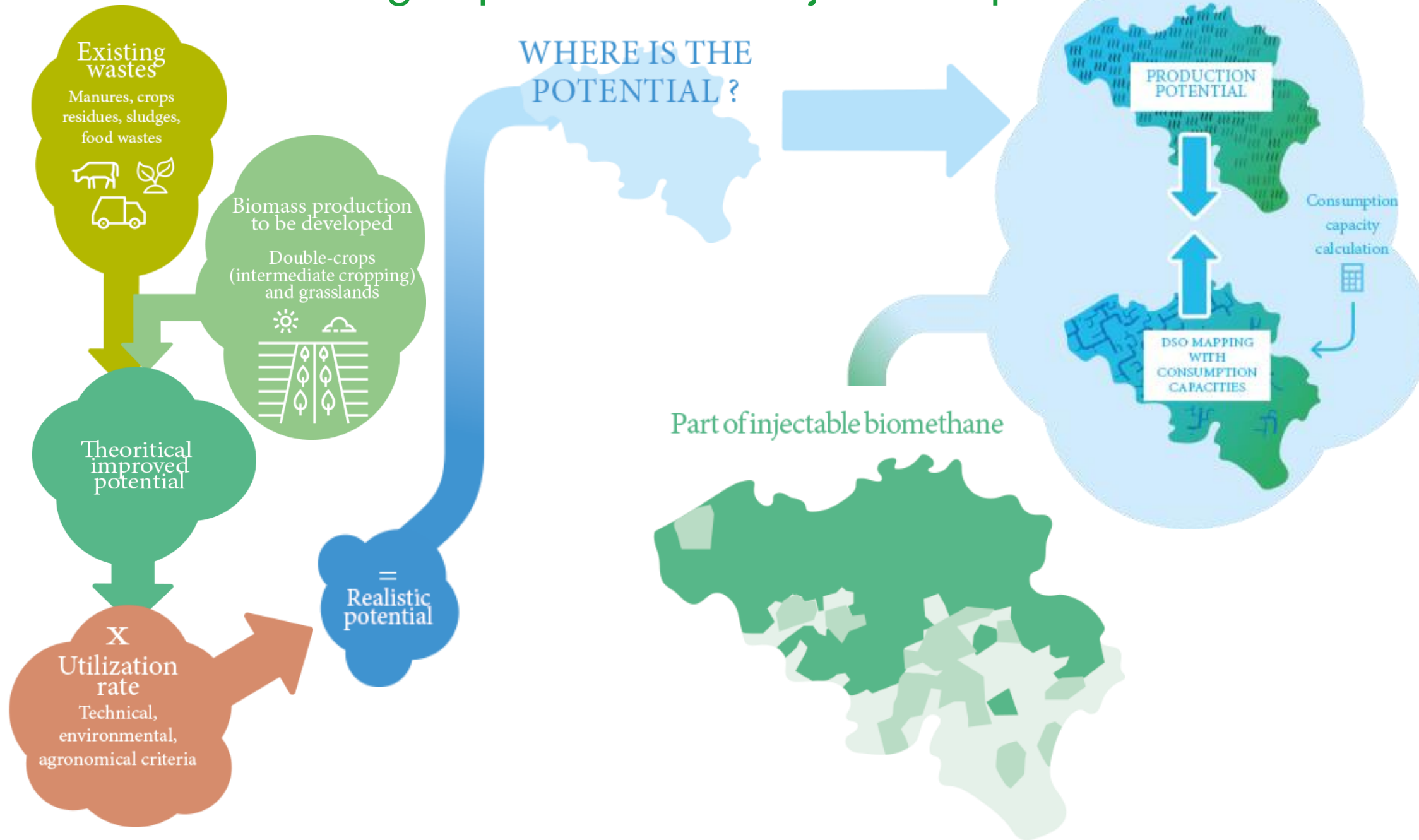
Different pathways to renewable gases - reminder



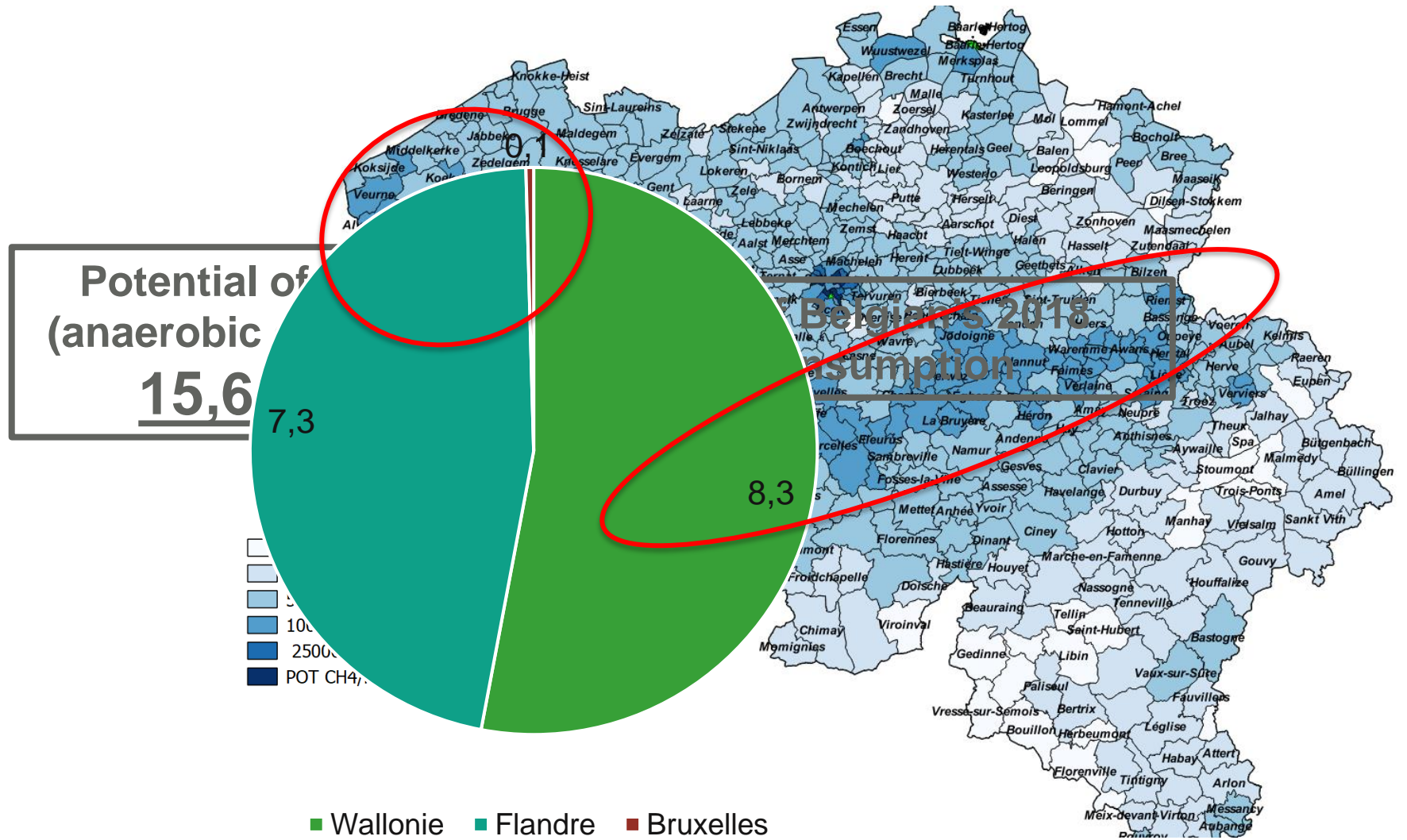
WHICH POTENTIAL IN BELGIUM ?



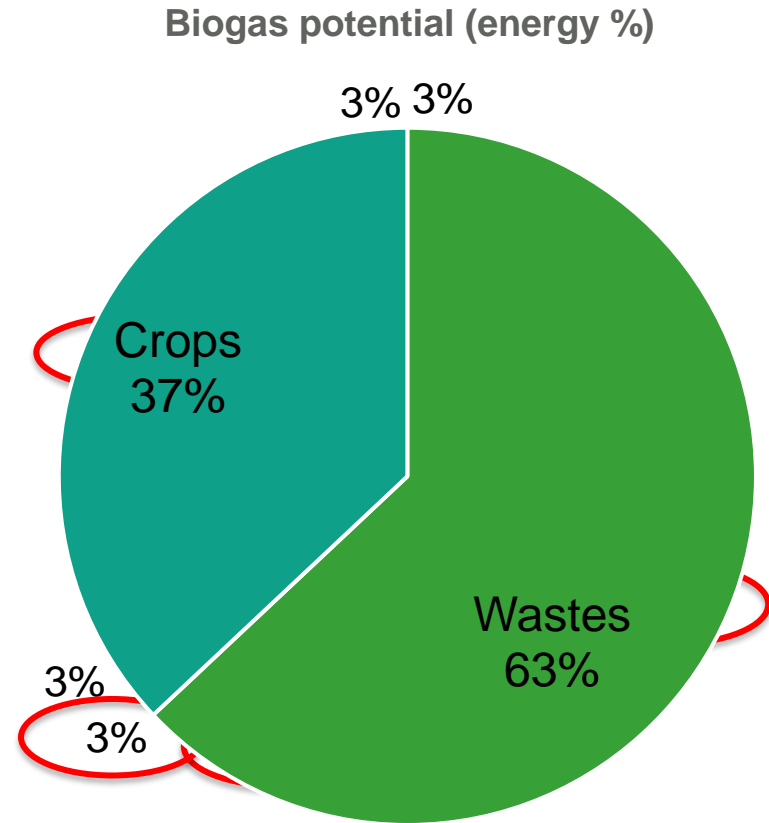
Belgium : method for biogas potential and injectable part



Belgium



Which feedstock ?



Agriculture : 80 %

- Manure
- Straw and other crop residues
- Crops (incl. double crops)

Others : 20 %

- Domestic wastes
- Sludge (waste water treatment)
- Green cuts

- | | | | |
|----------------|-----------------|-----------|-----------------|
| ■ Sludge | ■ Food industry | ■ Crops | ■ Crop residues |
| ■ F&V residues | ■ Green cuts | ■ Manures | ■ Wastes |

Thank you for your attention

Matthieu Schmitt, ValBiom

